

Item description/product images



Description

Material:

Spindle, steel 1.1213.
Nut steel 1.3505.
Wiper plastic.

Version:

Spindle rolled, induction hardened to 62 ± 2 HRC and polished.
Nut ground, flank induction hardened to 62 ± 2 HRC and polished.

Note:

Ball screw linear actuators with Gothic arch profile and 5 mm or 10 mm pitch.
Single-start, right-hand. Ball screw flange nut acc. to DIN 69051 Part 5 with flange.
Manufactured acc. to precision class C7 (tolerance $\pm 50 \mu / 300$ mm). Without preloading with axial backlash P0 (max. 0.08 mm)

On request:

We can produce ball screw spindles to your design from a detailed drawing.
Max. production lengths 5600 mm.

Other precision classes and preloading are available (see technical information).

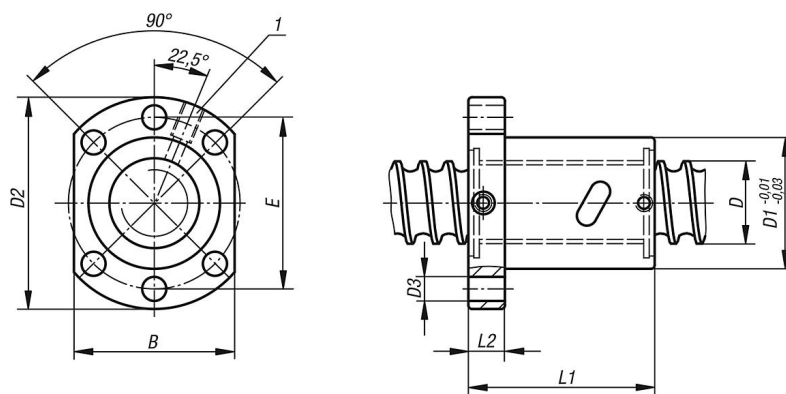
Attention:

The flange nut must not be removed from the spindle without a mounting aid as the balls will fall out.

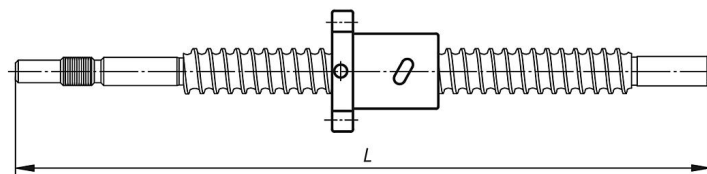
Drawing reference:

1) M6 lubrication hole

Drawings



Example of shaft machining:



Overview of items

Order No.	D	D1	Pitch	D2	D3	B	E	L1	L2	Ball Ø	No. of support circulations	Dynamic load rating N	Static load rating N	Stiffness K (N/µm)
24055-16052X	16	28	5	48	5,5	40	38	50	10	3,175	4	8880	15250	200
24055-20052X	20	36	5	58	6,6	44	47	51	10	3,175	4	9990	19950	250
24055-25052X	25	40	5	62	6,6	48	51	51	10	3,175	4	11190	25810	350
24055-32052X	32	50	5	80	9	62	65	52	12	3,175	4	12640	34030	400
24055-32102X	32	50	10	80	9	62	65	80	12	6,35	4	30930	61020	400